

**FOX CANYON GMA BASIN MANAGEMENT OBJECTIVES REPORT CARD  
PLEASANT VALLEY BASIN  
Updated January 2011**

**Goal:** Prevent inland migration of saline groundwater from coastal areas, underlying sources, and fine-grained interbeds.

**BMOs:** Water Levels: Average groundwater elevations sufficient to prevent landward migration from coastal areas and minimize vertical gradients.

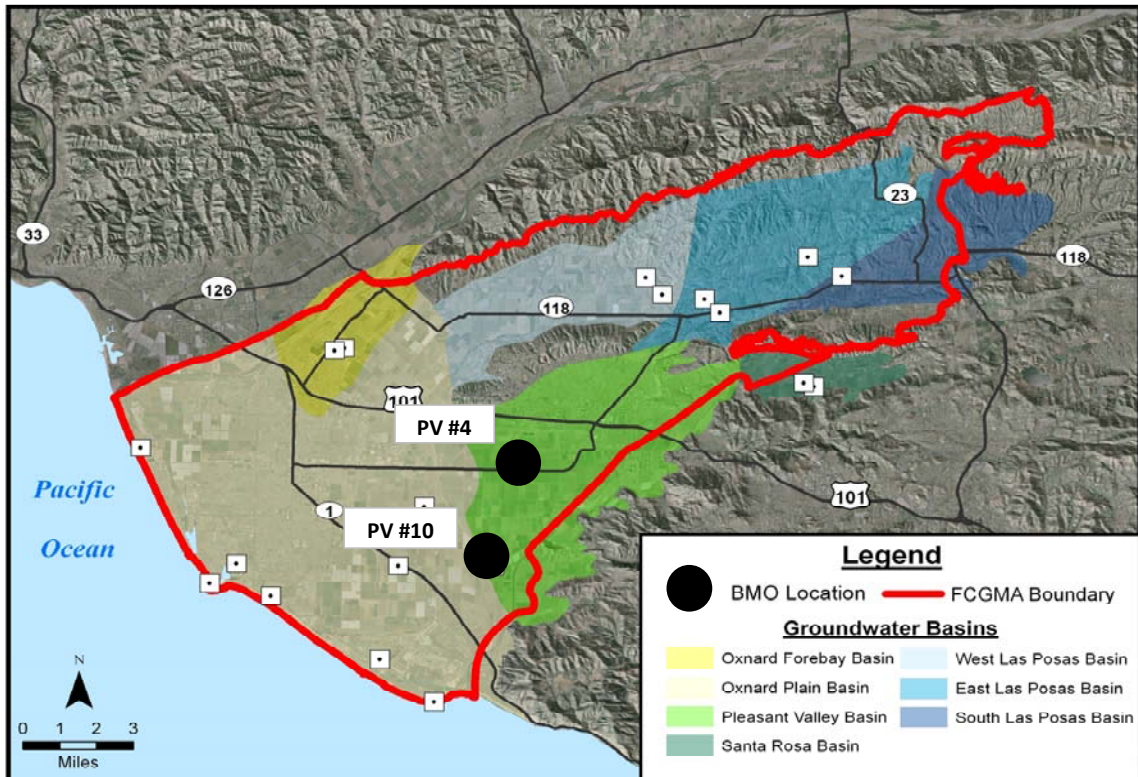
Chloride Concentration: 150 mg/L Chloride (LARWQCB Basin Plan Objective).

**Status Summary:** In 2010 LAS water levels remained significantly below the BMO. Water levels were approximately stable (with seasonal variation) at both BMO locations. The chloride BMO was met at both locations (nearly exceeded at PV #4).

**Status Summary Table**

State Well Number (name)	Depth (ft)	Water Level (ft msl)		Chloride (mg/L)		5-yr Trend	
		BMO	2010 Ave	BMO	2010 Ave	Water Level	Chloride*
01N21W03K01S (PV #4)	403-1433	20	● -14	150	● 144	→	→
01N21W21H02S (PV #10)	503-863	20	● -39	150	● 109	→	→

Note: \* = Trend evaluation is inconclusive; no chloride data between 2004 and 2010.



**FOX CANYON GMA BASIN MANAGEMENT OBJECTIVES REPORT CARD**  
**PLEASANT VALLEY BASIN**  
**Updated January 2011**

