

**FOX CANYON GMA BASIN MANAGEMENT OBJECTIVES REPORT CARD  
OXNARD PLAIN FOREBAY  
Updated January 2011**

**Goal:** Protect water quality at public drinking water wells (nitrate and TDS) and irrigation suitability (TDS).

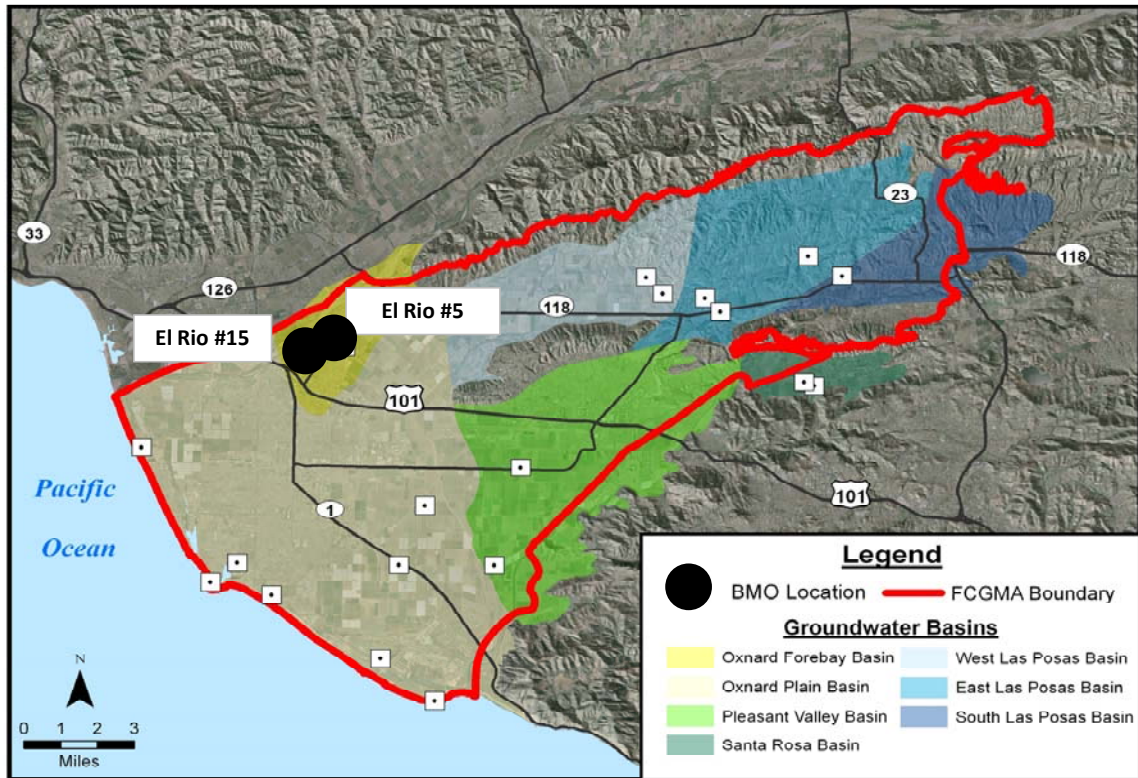
**BMOs:** Nitrate Concentration: 22.5 mg/L-NO<sub>3</sub> (50% of State of California MCL)

TDS Concentration: 1,200 mg/L (LARWQCB Basin Plan Objective)

**Status Summary:** Average nitrate and TDS concentrations were below the BMOs in 2010. Short term nitrate exceedances are managed by blending with other water sources. Nitrate concentrations increased slightly and TDS declined approximately 150 - 200 mg/L during the last 5 years.

**Status Summary Table**

State Well Number (name)	Depth (ft)	Nitrate (mg/L)		TDS (mg/L)		5-yr Trend	
		BMO	2010 Ave	BMO	2010 Ave	Nitrate	TDS
02N22W23B02S (El Rio #5)	135-277	22.5	19	1,200	838	↑	↓
02N22W23C05S (El Rio #15)	140-310	22.5	11	1,200	928	↑	↓



**FOX CANYON GMA BASIN MANAGEMENT OBJECTIVES REPORT CARD**  
**OXNARD PLAIN FOREBAY**  
**Updated January 2011**

